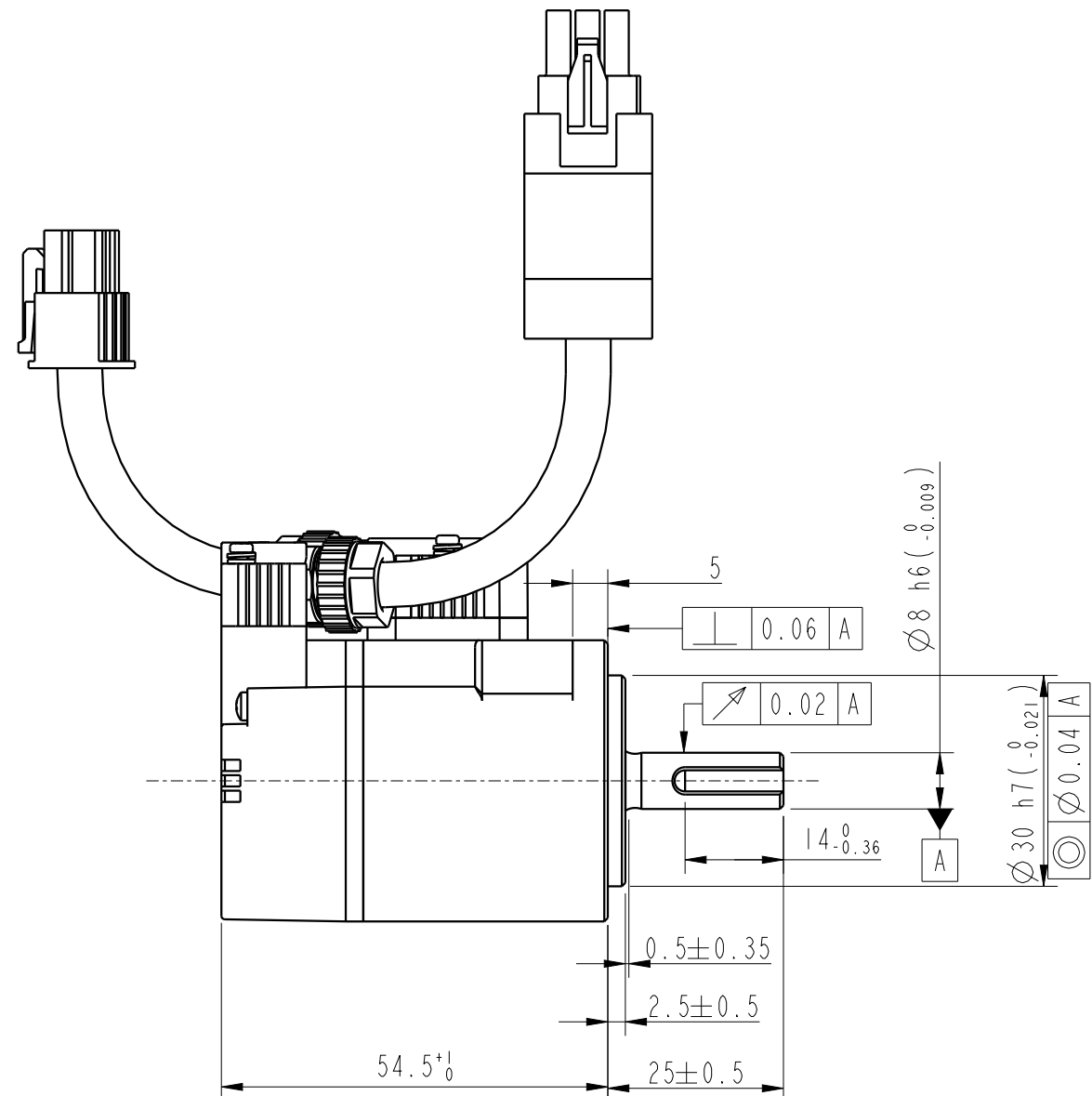
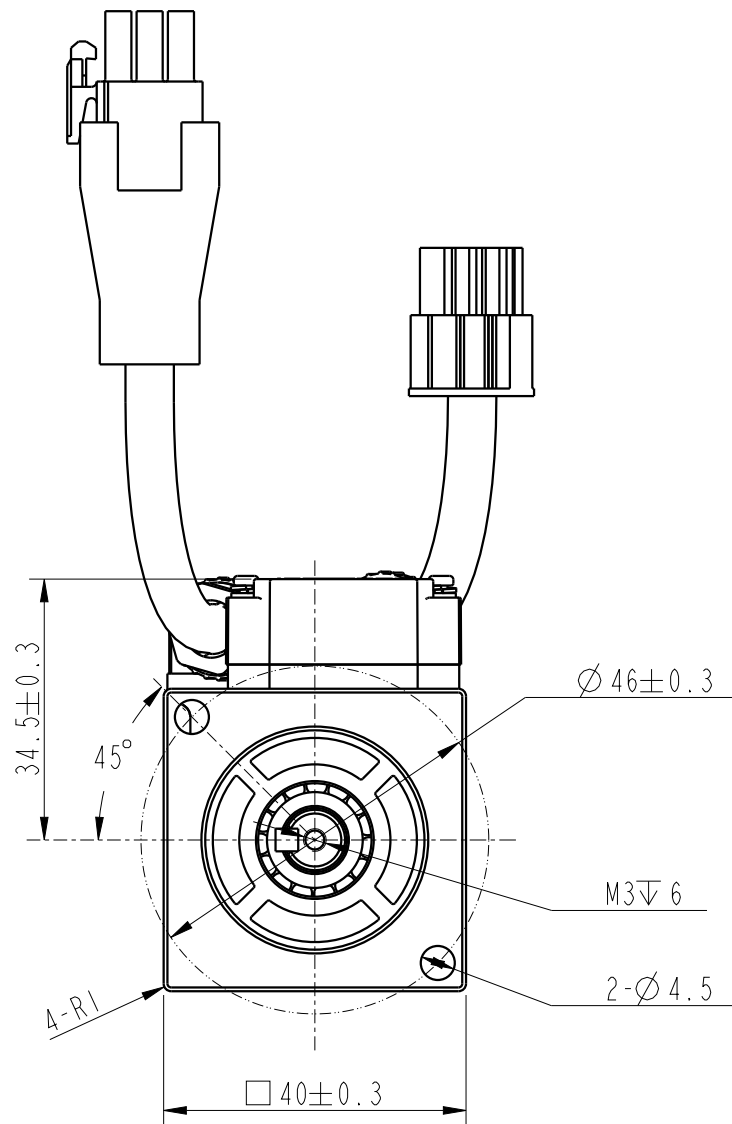
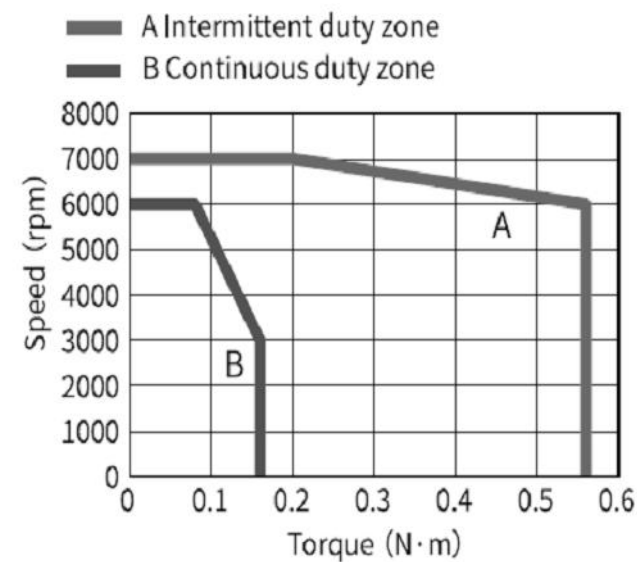


A3

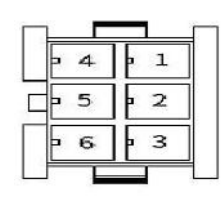
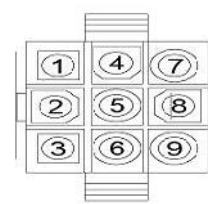
Amendment	Description

Unit: Millimeter (mm)



Encoder adapter connector

Power wire adapter connector

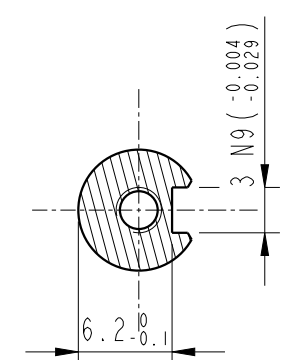


Encoder adapter connector

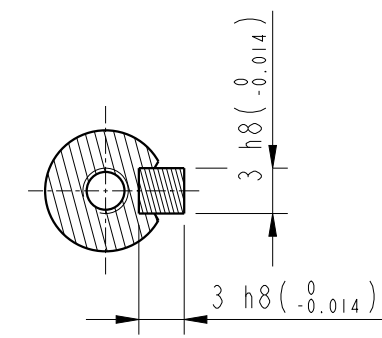
7pin terminal	1	4	3	6	9	8	7
Core color	blue	blue black	yellow	yellow black	red	black	groud wire
definition	DC+	DC—	PS+	PS—	+5V	0V	shield
	Pair		Pair		Pair		

Power wire adapter connector

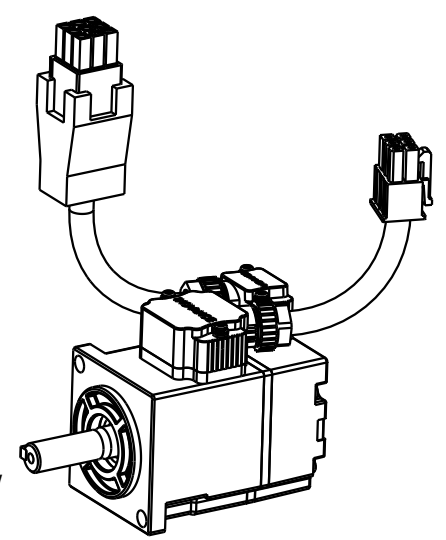
6pin terminal	5	4	2	1		
Core color	chartreuse	red	black	white		
definition	PE	W	V	U		



Dimension of shaft end

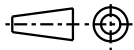


Dimension of shaft end with key



Basic function parameters	
Rated power kW	0.05
Rated voltage V	220
Rated current A	1.2
Peak current at rated speed A	4.8
Rated torque Nm	0.16
Peak torque at rated speed Nm	0.56
Rated speed rpm	3000
Max speed rpm	7000
Rotor inertia kg·cm ²	0.018±10%
Encoder resolution	23bit
Insulation class	F(155)
Protection class	IP67
Static torque of brake Nm	/
Brake power supply V	/
Brake backlash°	/
Duty cycle	S1
Radial load N	≤78
Axial load N	≤54

note:
1、The lead wire cable length is 300±20mm.

				Motor Outline Drawing			0111A159-WX	
B01	Replace	/	20250606					
B00	New Archive	/	20250410					
Version	Change method	Changed by	Date	/			Mark	 INOVANCE
Design	/							
Check	/							
Craft	/							
Verify	/			Weight	Scale	Version	Page 1 of 1	
Standardization	/			0.26kg	1:1	B01	Model	MS1H1-05B30CB-A330R-S-INT
Approve	/							